

BY THE WATERS OF BABYLON*

Psalm 136

Duration: 11:30

Third Mode

In-tonation: #8

adapted from Hourmouzios Hartophylax (1780-1840)

Adagio ♩=68

Ἐπὶ τῶν ποταμῶν

1

F Un. F

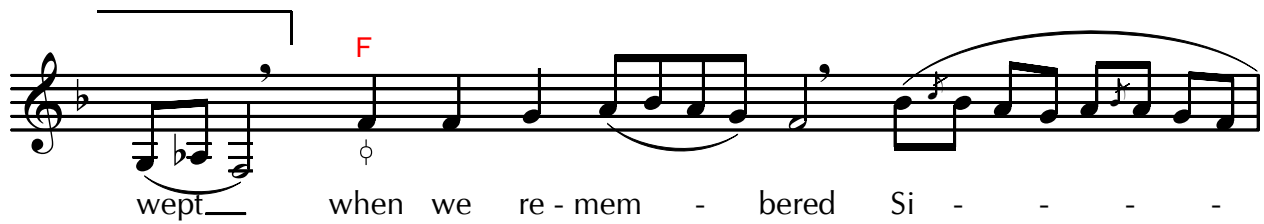
By the wa - - - - ters of Bab -

y - lon, there we sat

G↓ Hard Chromatic F↓

down and we wept and we

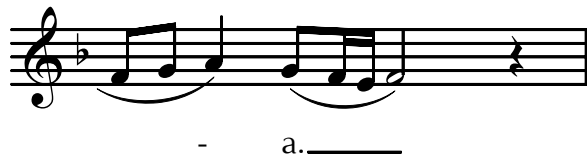
* This psalm is chanted on Meat-fare and Cheese-fare Sunday. On these two days, instead of reading Psalm 118 during Orthros, Psalms 134 and 135 and chanted heirmologically (see pp. 888 and 888) followed by this psalm.

By the Waters of Babylon


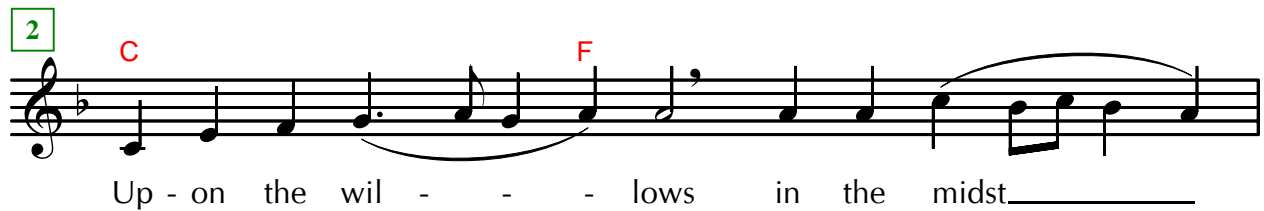
wept when we re-mem - bered Si - - - -



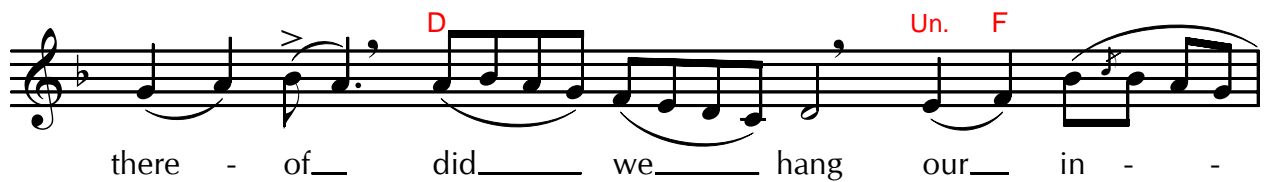
- - - - on. Al - le - lu - - - - i -



- a. -



Up - on the wil - - - - lows in the midst -



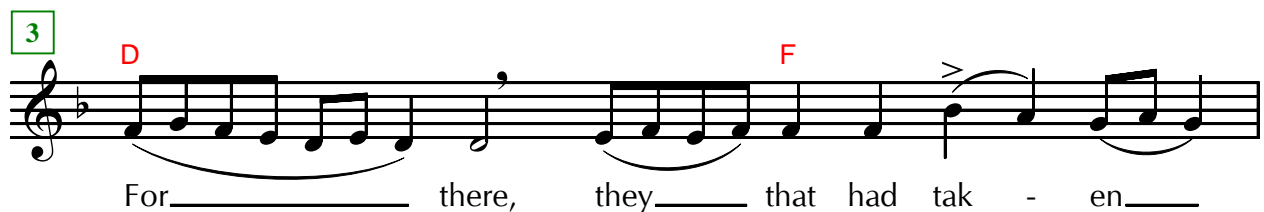
there - of did we hang our in - -



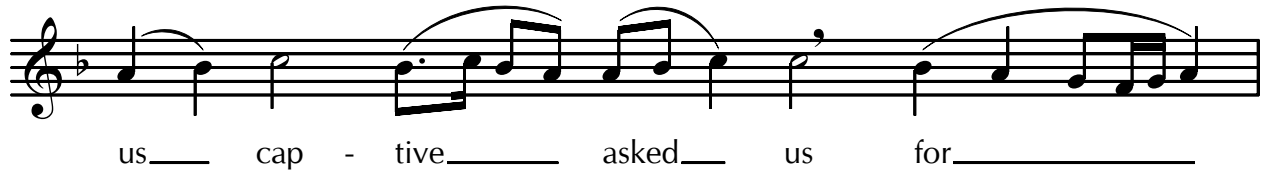
- - - - stru - ments. Al - le - lu - - - -



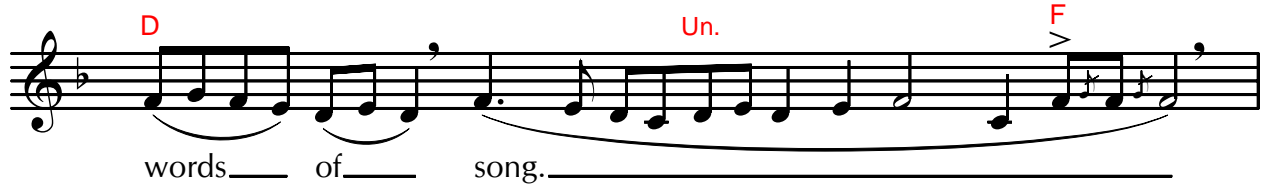
i - - - - a. -



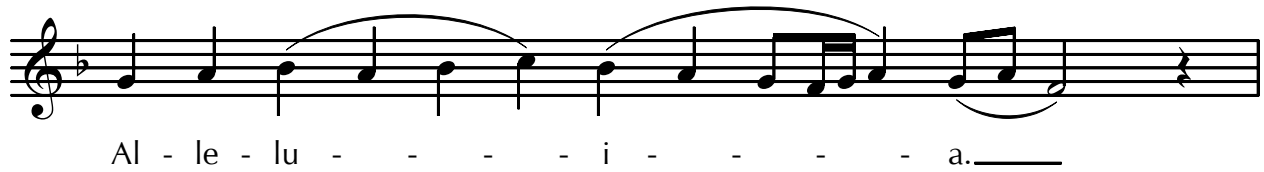
For there, they that had tak - en -



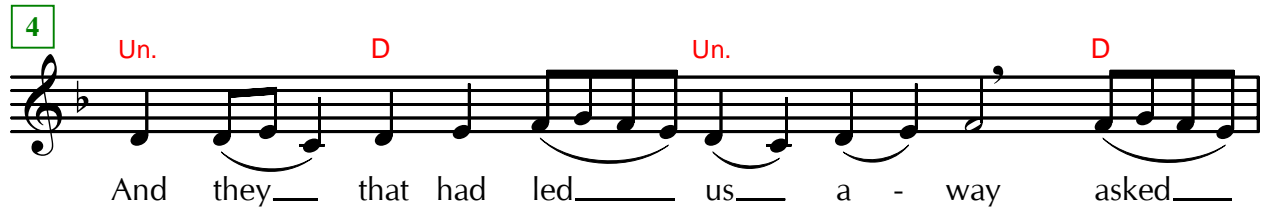
us cap - tive asked us for



words of song.



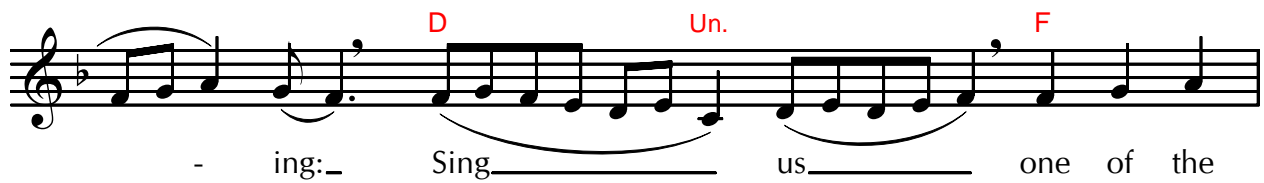
Al - le - lu - i - a.



4 And they that had led us a - way asked



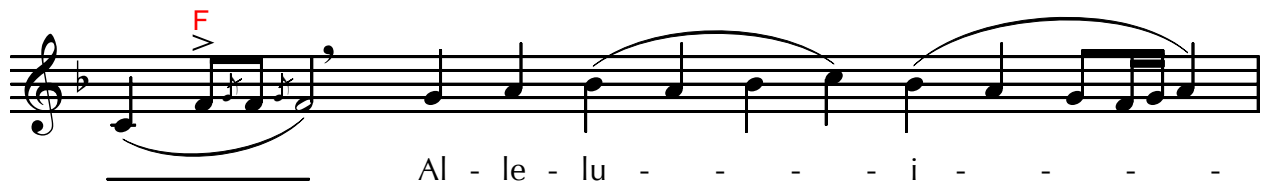
us for a hymn, say - - - -



- ing: Sing us one of the



songs. of Si - - - - on.



Al - le - lu - i - a.

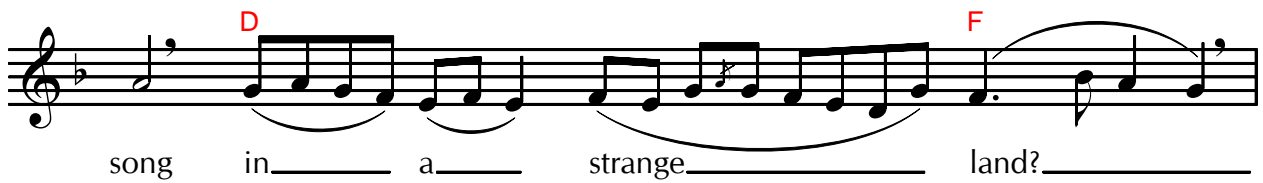
By the Waters of Babylon

a. _____

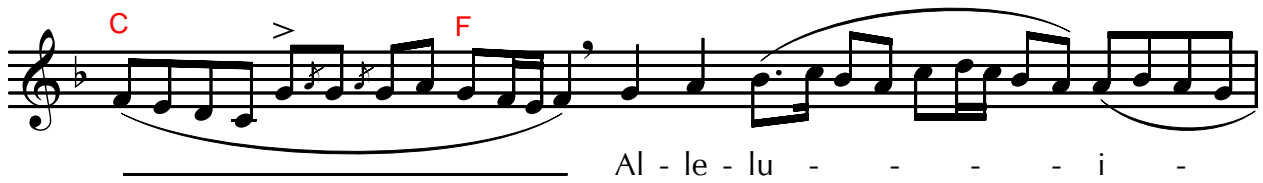
5



How shall we sing the Lord's



song in a strange land?



Al - le - lu - i -




- a. _____

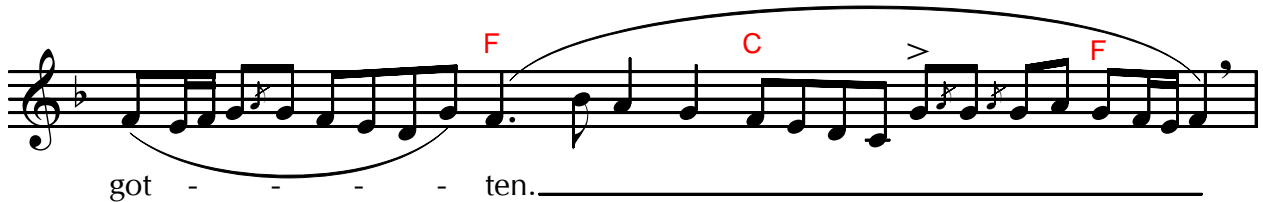
6



If I forget thee, O Je - ru -



sa - lem, let my right hand be for -



got - ten.

Al - le - lu - - - i - - - - a._____

7 **F** **Spathi** **G**

Let my tongue_____ cleave to___ my_____

D

throat,___ if I re - mem - ber___ thee_____

C **F** **C** **Un.** **F**

not._____

Un. **F**

Al - le - lu - - - i - - - - a.

8 **F** **G** **D** **C** **F**

If___ I___ set not___ Je - ru - sa -

D

lem_____ a - bove all oth - er,___ as___ at___

C **F** **C**

the head_____ of_____ my___ joy._____

By the Waters of Babylon

Un. F Un. F

Al - le - lu - - -

i - - - - a.

9

F D C

Re - mem - ber, O Lord, the sons the

Enharmonic (transposed)

B \flat F

sons of E - - - - dom, in the

D

day of Je - ru - - - - sa -

C B \flat Enharmonic (transposed) C Un.

lem.

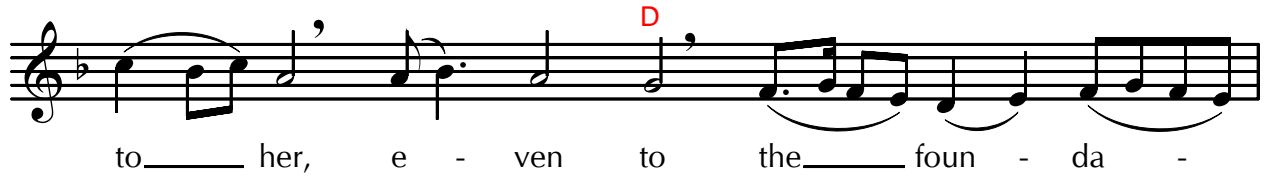
F

Al - le - lu - - - - i - - - - a.

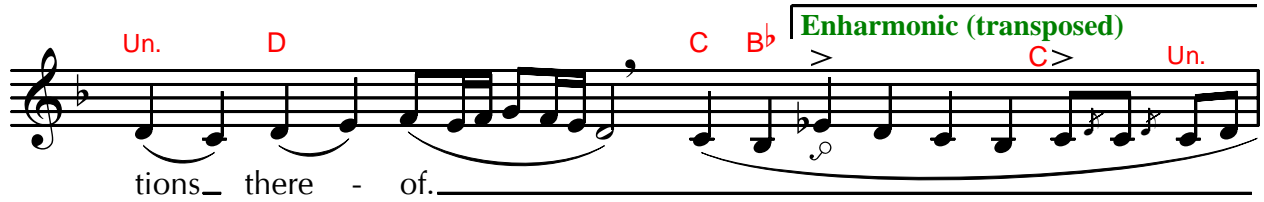
10

C F

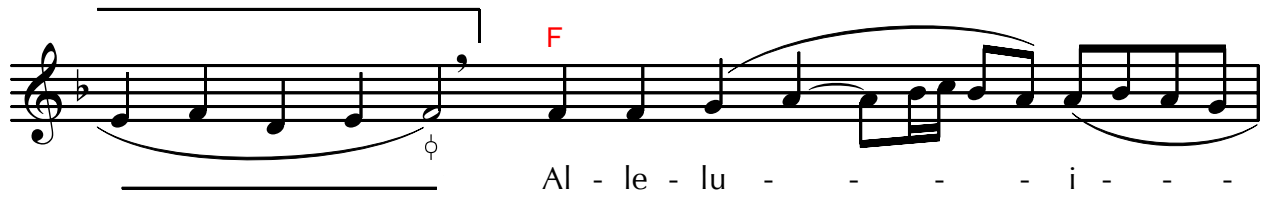
Who said: Lay waste to her, lay waste



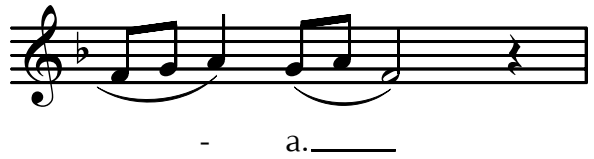
to her, e - ven to the foun - da -



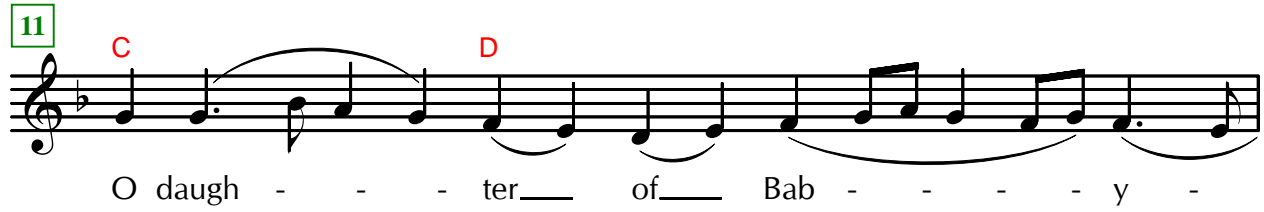
tions there - of.



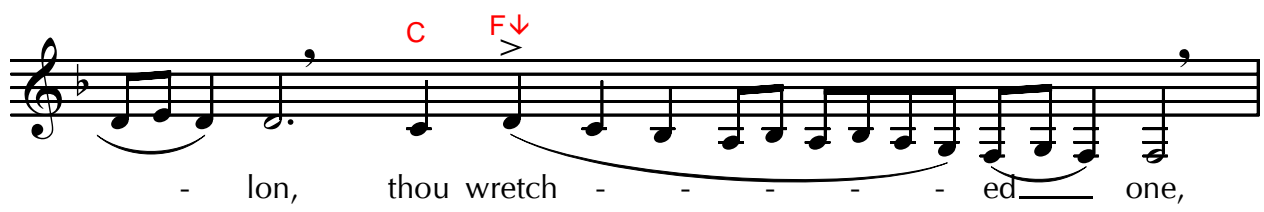
Al - le - lu - i -



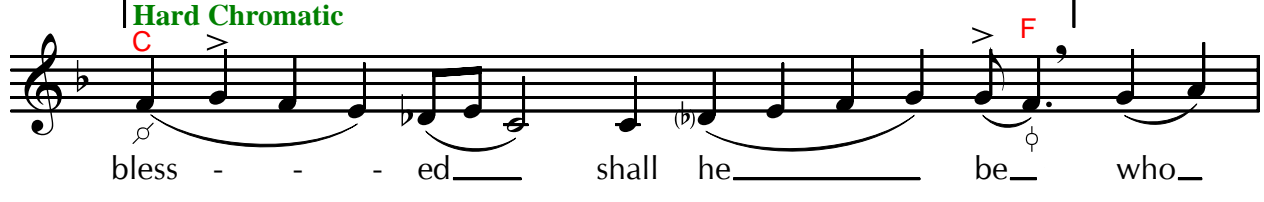
a.



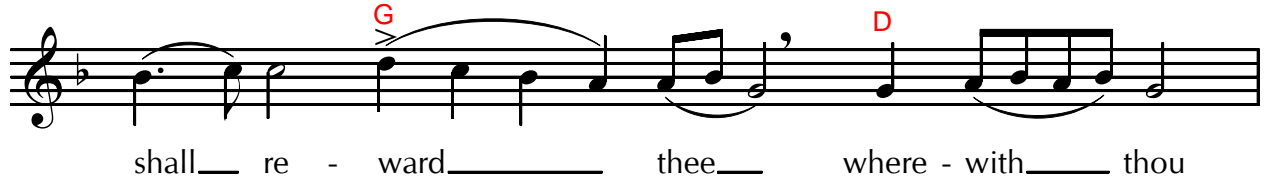
O daugh - ter of Bab - y -



- lon, thou wretch - ed one,

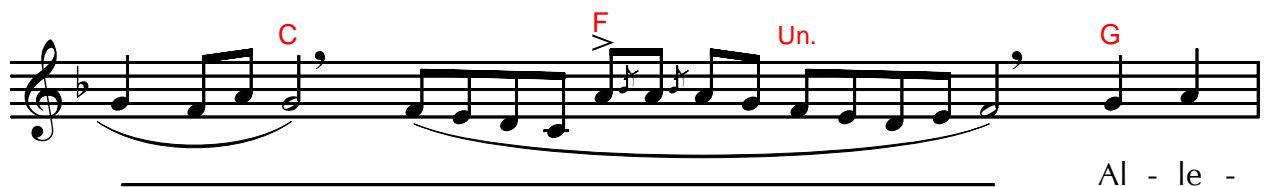
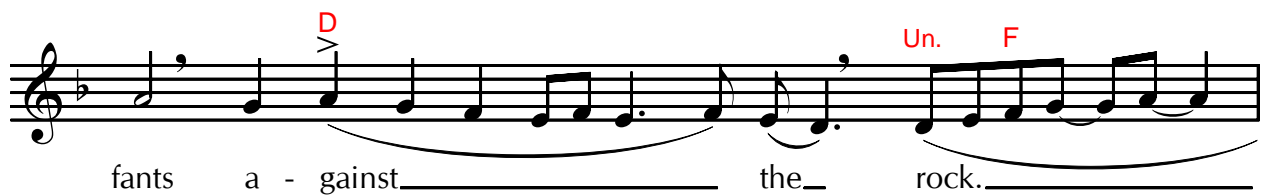
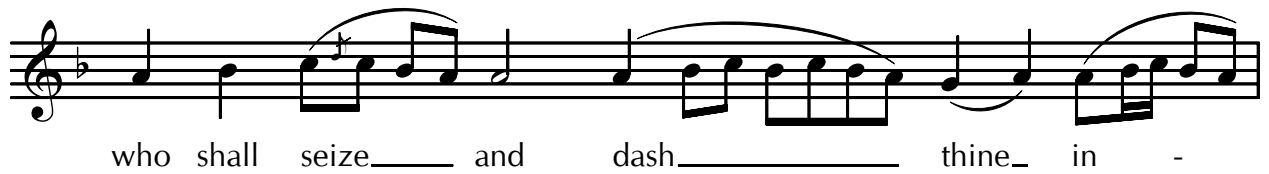
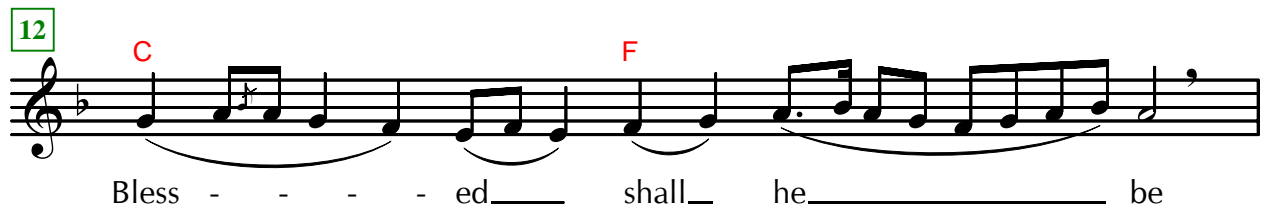
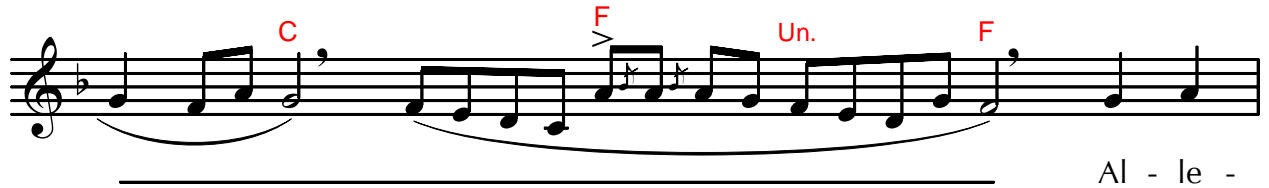
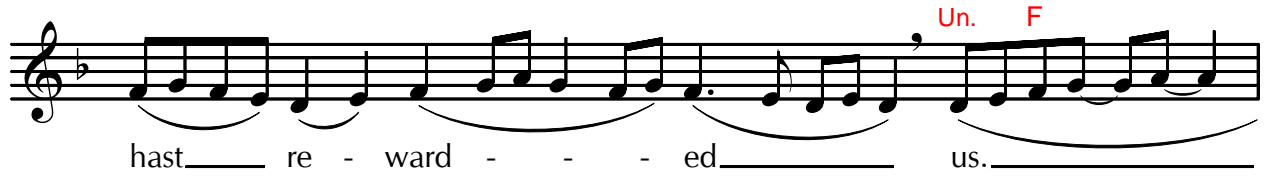


bless - ed shall he be who -



shall re - ward thee where - with thou

By the Waters of Babylon



(Continue immediately with the Resurrectional Evlogetaria on page 888.)